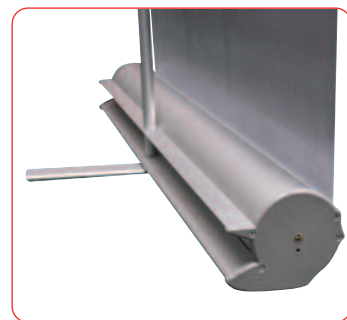




A lightweight economy roller banner with slim base and bungee pole making it very compact, complete with a twist out foot for extra stability.

features & benefits

- Lightweight components
- Quick-change universal rail
- Twist out stabilising foot for extra stability
- Available in anodised silver
- Choice of 800mm or 1000mm widths
- Includes quality carry bag



hardware specifications	graphic specifications	additional info
<p>Hardware Dimensions (mm): 2200 (h) x 825 (w) x 400 (d) approx. 86.61" (h) x 32.48" (w) x 15.75" approx. (Depth dimension refers to twist out foot)</p> <p>Weight: 4kg (8.8lbs) approx (including carry bag)</p>	<p>Visual Graphic Area: 800x2130mm</p> <p>Visual Graphic Area: 100x2130mm</p> <p>Including 150mm at bottom (non-visible image area in roll mechanism).</p>	<p>Included in kit: Top rail, base, bungee pole set and carry bag</p> <p>Availability: Anodised silver</p>

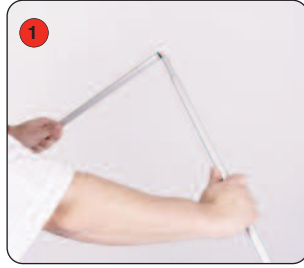
We are continually improving and modifying our product range and reserve the right to vary the specifications without prior notice. All dimensions and weights quoted are approximate and we accept no responsibility for variance. E&OE.

Assembly Instructions

Banner stand assembly



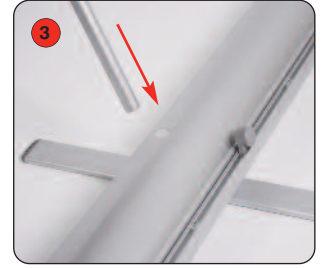
Kit includes: Top rail, base, bungee pole set and carry bag



1 Assemble the bungee pole set.



2 Open out the stabilising foot.



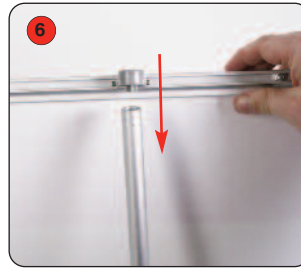
3 Fit the bungee pole into the banner stand base



4 Lift the top rail to raise the graphic from the base.



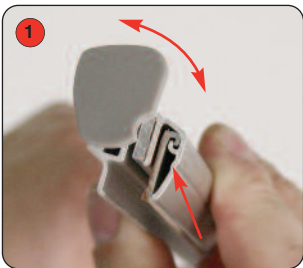
5 Lean the banner stand backwards and continue to extend the graphic.



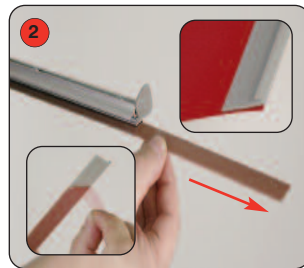
6 Secure the top rail cup onto the bungee pole.

Hold the Top rail whilst lowering the banner, (do not drop) to prevent damage to the graphic.

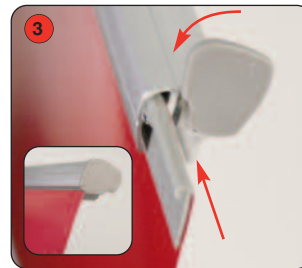
Graphic attachment - Adhesive rail option



1 Rotate the rail end cap to expose the plastic adhesive rail insert.



2 Slide the rail insert from the top rail. Adhere the insert to the **front** of the graphic.

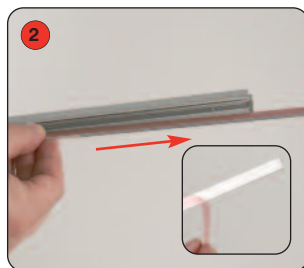


3 Slide the rail insert and graphic into the top rail. Close the rail end cap.

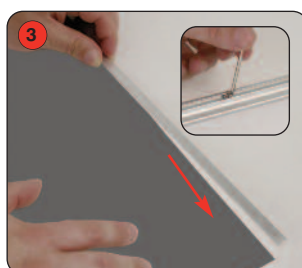
Graphic attachment - Grippa rail option (ideal for textiles and PVC)



1 Using the Allen key supplied with the user instructions, loosen the top rail screws. Rotate the rail end cap to expose the steel flat bar.



2 Slide the flat bar from the top rail and remove the backing paper.

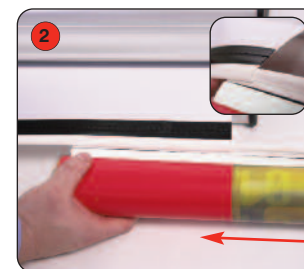


3 Adhere the flat bar to the **back** of the graphic. Slide the flat bar and graphic into the top rail. Tighten the screws to secure the top rail. Close the rail end cap.

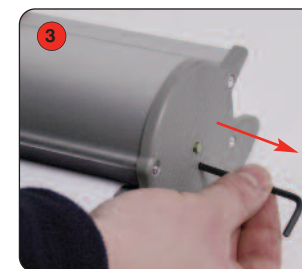
Graphic attachment - Base



1 Align and adhere the graphic squarely to the slider strip. (attach to front face of graphic)



2 Slide the graphic onto the leader strip.



3 Whilst holding the Top rail remove the locking pin from the base and gently allow the graphic to retract.

After fitting, the graphic should be left for 24 hours before use, to ensure the adhesive bonds sufficiently.